



- Magnetic principle
- Incremental measurement
- 6, 8 or 10 mm shaft diameters
- Resolution: 4 to 5.000 pulse
- 300 KHz replying frequency

TECHNICAL SPECIFICATIONS

Process Temperature	- 25 to 85 °C
Stock Temperature	- 40 to 100 °C
Chassis	58 mm Diameter
Replying Frequency	300 KHz
Working Speed	3.000 RPM max.
Shaft Diameter	6 mm, 8 mm, 10 mm

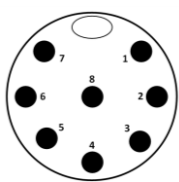
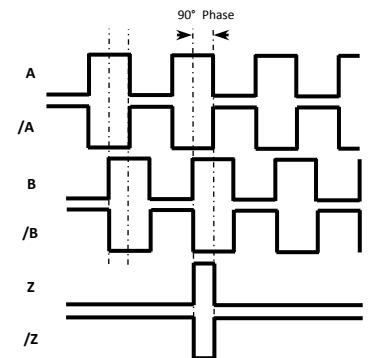
ELECTRICAL SPECIFICATIONS

Supply Voltage	+5 VDC, +10VDC...30VDC
Supply Current	50mA Nominal
Output Type	Push Pull, TTL Line Driver
Output Signals	A, /A, B, /B, Z, /Z
Output Current	100mA max. (Every Channel)
Connection	8 x 0,14 mm ² Cable with shield

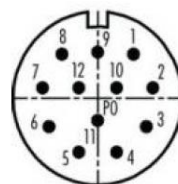
OUTPUT SIGNALS

PIN NO	SIGNAL	CABLE COLOR
1	A	YELLOW
2	/B	WHITE
3	+V	RED
4	0 V	BLACK
5	/A	BLUE
6	B	GREEN
7	/Z	GREY
8	Z	PINK
9	GROUND	SHIELD

In the left tablet the cable colors of sensors output signals are given. If the control circuit is suitable in the Line Driver sensors of the not output signals (/A, /B, /Z) have to be added to the system. If it is not suitable /A, /B, /Z signal cables must be fixed as insulated separately. Don't forget that these edges have electricity too.

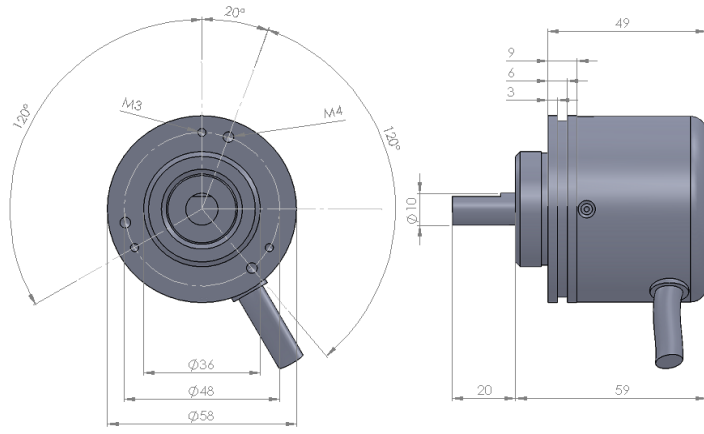


S16 PIN NO	SIGNAL	CABLE COLOR
1	A	YELLOW
2	/B	WHITE
3	+V	RED
4	0 V	BLACK
5	/A	BLUE
6	B	GREEN
7	/Z	GREY
8	Z	PINK
	GROUND	SHIELD

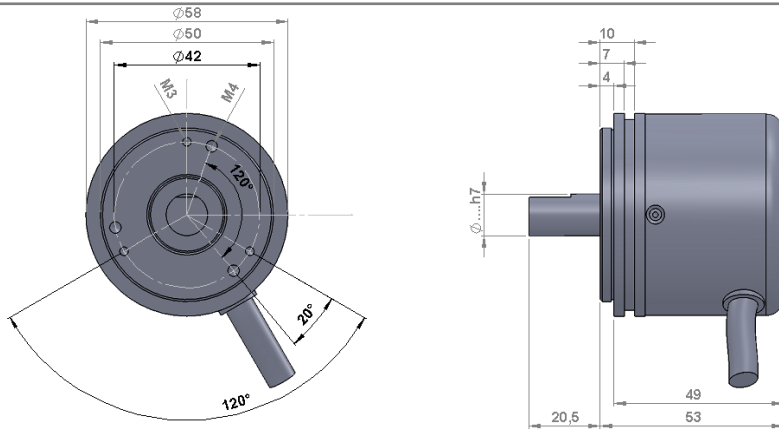


S23 PIN NO	SIGNAL	CABLE COLOR
5	A	YELLOW
1	/B	WHITE
12-2	+V	RED
10-11	0 V	BLACK
6	/A	BLUE
8	B	GREEN
4	/Z	GREY
3	Z	PINK
9	GROUND	SHIELD

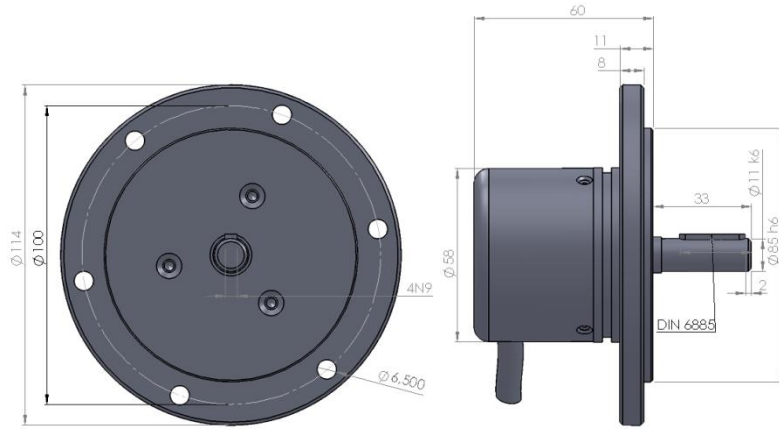
Clamping Flanş



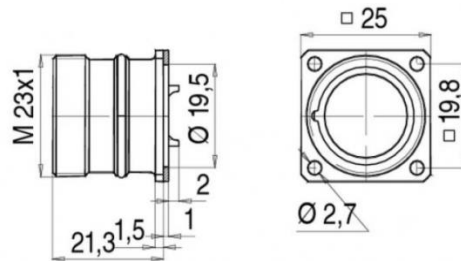
Synchro Flanş



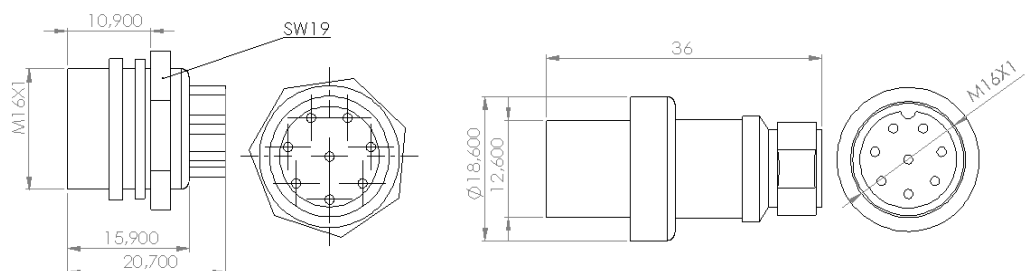
Tako Flanş



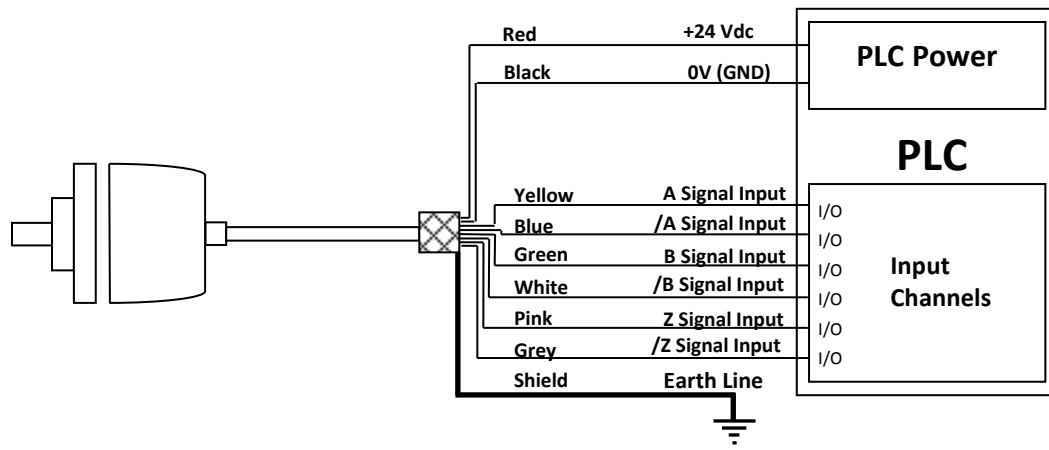
S23 Soket Konnektör



S16 Soket Konnektör



SAMPLE APPLICATION



S16 (M16, 8 Pin)
Socket Connector



S23 (M23, 12 Pin)
Socket Connector



Backside Poliimid
Spiral



Clamping Flange



Synchro Flange



Tacho Flange

ORDER CODING

<p>Series ARS : Magnetic</p>		<p>Body Size 58 : 58 mm</p>		<p>Power Supply and Output PP : 10...30 VDC Supply : 10...30VDC Output TTL : 5 VDC Supply : 5 VDC TTL Output HTL : 10...30 VDC Supply : 5 VDC TTL Output HPL : 5...24 VDC Supply : 5...24 VDC Push-Pull Output</p>			<p>Cable Length 3M : 3M (Standard) 5M : 5M 8M : 8M 10M : 10M S16 : M16 8Pin Socket Connector (Only Backside) S23 : M23 12 Pin Socket Connector (Only Sidewise) *Optional up to 35 meters</p>		<p>Shaft Diameter 6 : 6 mm 8 : 8 mm 10 : 10 mm</p>									
ARS	-	S	-	58	-	XXX	-	XXX	-	X	-	XM	-	X	-	X	-	X
<p>Shaft Type S : Shafted</p>		<p>Resolution From 4 Pulse to 5000 Pulse See resolutions*</p>				<p>Output Signals 3 : A, B, Z 6 : A, /A, B, /B, Z, /Z</p>		<p>Cable Direction A : Backside Y : Sidewise AS : Backside + Spiral</p>		<p>Flange Type C : Clamping S : Synchro T : Tacho</p>								

***Resolutions:**
 4 - 8 - 16 - 20 - 25 - 32 - 40 - 50 - 64 - 80 - 100 - 125 - 128 - 200 - 250 - 256 -
 400 - 500 - 512 - 800 - 1000 - 1024 - 2048 - 3600 - 4096 - 5000 (or on request)

Iran agent

Atek Sensor Technology A.S.



Tel: 021 66 3939 00
 Mob: 0912 147 3023
 www.IranAtek.ir

Tuzla Kimya Sanayicileri Org. San. Bolg. Melek Aras Bulvari, No:67 34956 Tuzla - Istanbul / TURKEY
 Tel: +90 216 399 44 04 Fax: +90 216 399 44 02
www.ateksensor.com info@ateksensor.com